



# Mercer County Historical Society Newsletter

"Preserving Mercer County History"

Volume 25, Issue 2

Editor: Mary Jane Sticklen

Apr/May/June 2021

Publisher Kellogg's Printing

## Mercer County Historical Society

&

### Essley-Noble Museum

1406 - SE 2nd Avenue

Aledo, IL 61231

Phone: 309/582-2280

### Hours

April – Oct: Thurs, Fri, Sat, 1-5:00pm

Nov - March: Saturdays 12:00-4:00pm



### Officers & Board of Directors

Ronn Dillavou, President

Beverly Gray, Vice President,

Donna Gresch, Secretary

Rex Johnson, Treasurer

Bill Bertrand

Hugh Brown

Susan DeBlock

Dave Frieden

Donna Gresch

Paul Hampton

Jim Holmes

Richard McMeekan

Linda Morrow

Judy Redlinger

Mary Jane Sticklen

Jon Swanson

Shannon Boynton, Curator

Dennis Henderson, Saturday Host



### For Genealogy Queries write to:

MCHS Genealogy Dept.

PO Box 269

Aledo IL 61231-2504

Or: email the museum



*Memberships available for \$20/household or \$300 for a lifetime membership*

*For correspondence, membership or change of address contact:*



Essley-Noble Museum

PO Box 269

Aledo, IL 61231



**Website:** mercercountyhistoricalsocietyil.org

**Email:** mcmuseum@frontier.com

Find us on Facebook

www.facebook.com/mchsil

## Dr. Who?

By Shannon Boynton

Dr. Lucius Hoyt was a big-name physician when he arrived in Mercer County in 1933. He went to the University of Colorado, the University of Illinois, and finished at the University of Chicago Medical School. Dr. Hoyt also served as an ambulance driver in World War I. He married Thelma Winters in Chicago, Illinois. The couple moved to Viola, Illinois before moving to Reynolds permanently in 1933. Dr. Hoyt had a few offices on main street before he and his wife built their home/practice on the edge of town. From October 10, 1942 through January 3, 1946, Hoyt served as a surgeon in the 107th Evacuation Hospital, achieving rank as Captain. He was inducted on October 10, 1942 at Fort Knox, Kentucky. Dr. Hoyt continued servicing as physician and surgeon in Reynolds, Illinois and as staff at St. Anthony's to support the community. As a physician, Hoyt serviced Reynolds and the surrounding Mercer County area for 40 years before he passed away in 1973. To this day, people still remember Hoyt for his knowledge, kindness, and dedication.

Dr. Hoyt was one of the founders of the American Legion Post 1116 in Reynolds, Illinois. He and 16 other veterans met with state representative Oscar Wilmington, the organizer of American Legion's State Department on February 6, 1948. During this meeting, officers were chosen, and Lucius Hoyt was elected commander of Post 1116. The official date of the Reynolds American Legion Post was declared by the American Legion Headquarters on June 13, 1948. The name "Community Post No. 1116" was suggested by J. Henry O'Leary due to the post taking in multiple surrounding cities such as Illinois City, Edgington, Buffalo Prairie, Taylor Ridge, Reynolds, Matherville, Sherrard, Preemption, and Cable. Right out of the gate, commander Hoyt and his officers wanted to establish an athletic field and legion home. They raised a \$6,000 note and purchased 6 acres of land at \$500/acre from Edward E. Bell, Sr. On Monday, July 5, 1948 there was a dedication for Legion Park and 2,500 people attended! The purpose of Reynold's American Legion is to aid veteran's affairs, rehabilitation, children, youth programs, and community service. The Reynold's American Legion Post 1116 has committed to servicing the area and completing their mission for 73 years. (Research from Village of Reynold 1876-1976)



(Above Photo from left to right: Edward Barnes, Gladys Bell, Dr. Lucius Hoyt, and Max Benson: November 11, 1965)

## Curator's Corner

Summer hours have commenced! We are now open Thursday, Friday, and Saturday from 12:00 p.m. - 5:00 p.m. Did you know that the museum has publications for sale? I have added a list of all publications that we currently have for sale and their pricing to our website. Don't live in Aledo or the Mercer County area?

No problem, call (309-582-2280) or e-mail ([mcmuseum@frontier.com](mailto:mcmuseum@frontier.com)) and I will get it shipped to you with a small shipping fee! If you have a family or friend that might be interested in becoming a member of the Mercer County Historical Society, tell them to check out our website or Facebook page.

If you have not done so already, come check out our new display! Due to the generous donations from the Flint and Baker families, we now have a Hawthorn Ridge Golf Course display! Hawthorn Ridge was founded by local farmer Mitchell Warwick. With the help of his nephew, Paul Flint, they opened spring of 1978. Hawthorn Ridge closed September 2020. The golf course was loved by many and used throughout the years for state tournaments, high school students, and beloved golfers.

*Shannon Boynton, Curator*



## Education - A Priority for the Warwick Family

One of the things I learned about my mother's family at an early age was that she and her two brothers had graduated from the University of Illinois in Champaign-Urbana. My two uncles, Everett J. Warwick and Mitchell Warwick, and my mother, Margaret Warwick, Aledo High School alums of 1934, 1936, and 1939 respectively, were awarded scholarships to attend the U. of I. Everett later earned his Doctorate from the University of Wisconsin, prior to a long career with the USDA, specializing in the area of beef cattle breeding. My mother earned her Master's Degree from Illinois State University and taught Home Economics for over 30 years. Mitchell was a successful farmer and was the founder of Hawthorn Ridge Golf Course, built south of Aledo on a portion of the family farm. Education was definitely a priority for these Warwick children of the Great Depression. There is nothing particularly remarkable about three young people graduating from college in the 1930's and early 1940's.

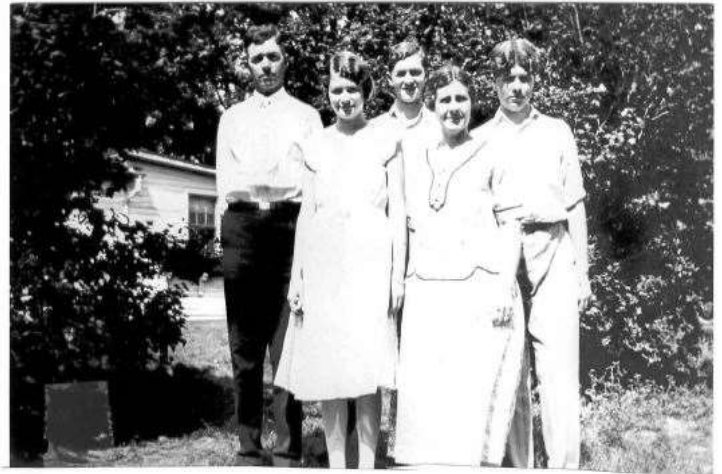
In retirement, I have become interested in family history. I feel I have discovered something about the Warwick family of Mercer County, Illinois that is noteworthy. In the Records of Ancestry, Descendants

of James A. Warwick and Catherine Black Warwick history prepared by Dr. Everett J. Warwick in 1985, this was an entry: "He and his wife were strong supporters of education as is indicated by the unusual amounts of education obtained by their children. In an era when only a small percentage of the children



(Above, John and Catherine "Black" Warwick)

of farmers attended or graduated from high school, it was indeed noteworthy that all five of their children had at least some college and that two graduated from college and subsequently earned professional and graduate degrees."



(Above: Paul M. Warwick Family, from right to left, Paul, Margaret, Everett, Bernice, Mitchell)

It might be noted that James A. Warwick, 1847-1911, and Catherine "Kate" Warwick, 1855-1941, were quite involved in the United Presbyterian Church. An important event in the life of James, my great grandfather, was his ordination and installation in the office of ruling elder in the United Presbyterian Church of Aledo. He served in this capacity for 23 years. I mention this connection with the Warwick's

church affiliation because three of the five children attended Monmouth College, which is tied to the United Presbyterian Church.

Leota Belle Warwick, 1883-1971, graduated from Aledo High School in 1902. She was a student of music and history for two years at Monmouth College. Leota never married. After college, she was active in the United Presbyterian Church. She lived on the farm with her mother and her brother, Murray, and assisted with the farm business in addition to keeping house.

Nancy Martha Warwick Guthrie, 1884-1977, was married to Wallace Guthrie in 1931. Nancy graduated from Aledo High School in 1902, having studied Latin for four years. There were additional subjects she wanted to take in high school, so she returned for a fifth year. She then taught one year in a rural school prior to entering college. She graduated from Monmouth College in 1908. Nancy earned her Master's Degree in languages from Indiana University. She taught in Mercer County rural schools, in two Illinois high schools, United Presbyterian mission schools in eastern Tennessee and Kentucky, and Knoxville College, Knoxville, Tennessee. After marriage, she lived for twelve years on her husband's farm east of Millersburg, Illinois. During WWII, she returned with her husband to east Tennessee, teaching and doing church work. After returning to Aledo in the mid-1950's she was active in the community. Nancy was honored by the Aledo Jaycees as "Woman of the Year" in 1971 at the age of 86.

Paul Mitchell Warwick, my grandfather, was born in 1887 and died in 1978. He graduated from Aledo High School in 1904. He attended Monmouth College in 1905 and 1906. While at Monmouth, he enjoyed attending football and basketball games and the excellence of the teams. He commented to family members that the "forward pass" was just surfacing in football when he was in college. Paul was a lifelong farmer, working for a neighbor 1907-1911, including a harvest season in North Dakota. After his father's death in 1911, he operated the home farm with his mother until his marriage to Mary Bernice Ramsey in 1914. He farmed south of Aledo until his retirement. He was an active member of the Farm Bureau, the Kimel School Board, and the United Presbyterian Church.

McMurray "Murray" Warwick, 1890-1955, attended William and Vashti College in Aledo, where he was member of the varsity football team. Unmarried, he farmed the land in Mercer Township where he was

born. He was for many years an active breeder of Tamworth hogs and Shropshire sheep, exhibited in local shows, the Chicago International Livestock Exposition, and was active in the Mercer County Fair. Bruce L. Warwick, 1893-1971, attended Aledo High School and William and Vashti College. He married Florence Hogle in 1918. He earned his degree in veterinary medicine from Iowa State University in Ames and his Ph. D. from the University of Wisconsin, in Madison. Bruce spent much of his career doing experimental work with sheep and goats at College Station, Texas (Texas Agricultural Experiment Station). Bruce was nationally and internationally recognized for his research in the science of genetics related to practical breeding and production of farm animals.



(Hawthorne Ridge Display at the Museum)

The five children raised by James A. Warwick and Catherine Black Warwick born between 1883 and 1893 all attended at least some college in the early 1900's--- it seems very unusual for farm families of that era, but it is part of Mercer County history!

*Submitted by Paul Flint, Great grandson of James and Catherine Warwick and Grandson of Paul and Bernice Warwick.*

## What is it?

The item in the past newsletter was a disk sharpener for the blades while disking a field. This mystery item is made of metal and has movable parts. What is it?



## Board Member

Do you love history and your community? If you answered yes to both of those questions, read on! The Mercer County Historical Society and Essley-Noble Museum are looking for a new board member to complete our team. We are looking for someone who is dedicated, creative, and a team-player that can help grow our museum with new ideas. Join our historical society as we pave the way for generations to come so they too can enjoy local history! Ideally, we need members from Suez, North Henderson, Duncan, Richland Grove, or Keithsburg townships of Mercer County, we would love to hear from you.



If you are interested in becoming a board member, please send us an e-mail at [mcmuseum@frontier.com](mailto:mcmuseum@frontier.com) with your information and why you would want to be a board member. We cannot wait to hear from you!

---

**This newsletter sponsored by:**

**DENNISON**

1005 SE 3rd Street  
PO Box 252  
Aledo, Illinois 61231  
(309) 582-5663

*Funeral Homes*

1601 13th Street  
PO Box 194  
Viola, Illinois 61486  
(309) 596-2121