



Mercer County Historical Society Newsletter

Volume 17, Issue 2

Editor: Mary Jane Sticklen

Apr/May/June 2013

Publisher Kellogg's Printing

Mercer County Historical Society & Essley-Noble Museum

1406 - SE 2nd Avenue
Aledo, IL 61231
Phone: 309/582-2280

Hours

April – Oct: Wed, Sat, Sun 1-5:00pm
Nov - March: Saturdays 12:00-4:00pm



Officers & Board of Directors

Bill Bertrand, President
Dave Duncan, Vice President,
Mary Jane Sticklen Secretary
John Huffstutler, Treasurer
Shirley Ball
Stephanie Braucht
Ronn Dillavou
Dave Frieden
Beverly Gray
Twyla Holmes
Roger Kiddoo
Doug McCaw
Richard McMeekan
Linda Morrow
Sandi Sharer

Veda Meriwether, Curator
Dennis Henderson, Sunday Host



For Genealogy Queries write to:

MCHS Genealogy Dept.
PO Box 269
Aledo IL 61231-2504
Or: E-mail the museum

Email: mcmuseum@frontier.com



Please address all correspondence to:
PO Box 269

Memberships available for \$15/household

For membership or change of address contact:

Essley-Noble Museum
Box 269
Aledo, IL 61231



Website: www.mchsil.org
Email: mcmuseum@frontier.com

Illinois' Oldest Male Twins

The above heading appeared in the April 2, 1914, edition of the Times Record. A picture of the twins accompanied an article telling us of George and Washington Boone.

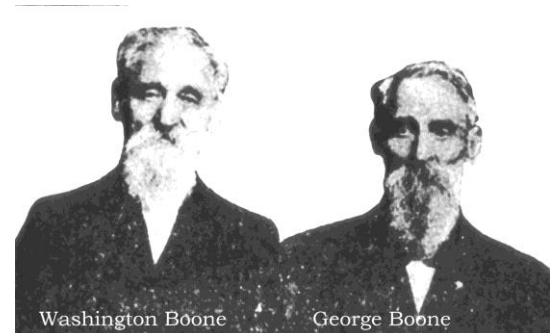
The twins were born on President George Washington's birthday, February 22, 1837, in Medina County, Ohio. Their parents, Hezekiah and Sarah Ann (Greene) Boone, divided the name of the father of our country between their two sons.

The family's westward movement took them first to Perry County, Illinois, and then to Mercer County. After two years at Millersburg, they settled a mile west of Aledo in 1853.

It was noted in the article that George Boone drove one of the teams that brought the first printing press to Aledo. Mr. Boone was there to see and read the first copy of the Aledo Record in 1856 and "has been a regular reader of the paper since that day."

An injury prevented Washington from serving in the Civil War, while George served as a private in Company I of the 17th IL US INF from 1861 to 1862 and as a first lieutenant in Company F of the 140th IL US INF in 1864. From the Detail Reports, we have the following description of George in 1861: height – 5'10", hair – black, eyes – hazel; in 1864: height – 5'9 and 1/2", hair – dark, eyes – blue, occupation – shoemaker.

Washington Boone married Belinda Baxter on February 27, 1867, in Mercer County. Six children, Lois, William, Jessie Rachel, Bessie, W. Scott, and Mary Dee, are listed in his obit. It was noted also that he is great-grandfather to Wayne Laverne Dixon, son of Mr. and Mrs. Frank Dixon. He was in the grocery business in Aledo for many years.



George Boone married Nancy Ann (Shearer) Fullerton on November 28, 1865, in Rock Island County. They lived to celebrate their 50th anniversary in 1915. Two children are mentioned in his obit—a daughter Ella Zentmire of Nebraska and a step-daughter Mrs. Amos Kiddoo of Oklahoma. George and Nancy farmed on 80 acres situated southwest of Aledo. The farm was sold after Nancy's death in 1920 to Earl Bell. Their house in Aledo was sold to J.S. McCreight.

The twins were the longest-living male twins in Illinois from the time of the article in 1914 until George Boone died on December 23, 1915. Washington Boone died December 15, 1920. Both twins lie in peace at the Aledo Cemetery

Curator's Corner

Welcome to our new life-time members - Craig and Ann McEntee, Preemption and Jason Olsen of New Boston, IL. Accession for 2013 have been from Keith Clark of Aledo and Carmen Volk of Davenport. Thank you for your gifts. We hope to be able to accept all Mercer County related objects of interest. Our staff is diligently working to find more space to store them. Everything related is important to our history here in Mercer County.

Help support your museum by telling others about membership and come visit YOUR Mercer County Museum. Warm weather hours begin April 3 and we are open Wed., Sat. and Sun. from 1:00-5:00. Exhibits at the entry have been reorganized and we are working at sprucing up the machine shed.

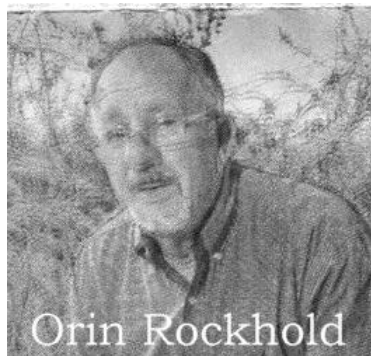
Veda Meriwether, Curator



Spring Open Meeting

The Mercer Co. Historical Society's **Spring Open Meeting will be Monday, April 15, 7:00 p.m.** at the Essley-Noble Museum.

Orin Rockhold will present a very interesting multi-media program, "Cemeteries in Ruin," concerning his work preserving rural cemeteries.



Orin Rockhold

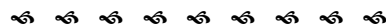
He writes, "I belong to several genealogy groups including Aledo. I love to do research and help others solve their problems. I take care of the Reynolds cemetery and joined a small group who

have rebuilt two cemeteries. (My talk) will be on the destruction of and the preservation of cemeteries. It is from the point of a genealogist and the effect it has on research."

Orin has had a passion for genealogy and preserving local history his whole life. He has worked on restoring rural cemeteries in Rock Island County and now he is working on restoring the Eggleston rural cemetery in Preemption Township. He was a pattern maker at Deere & Co. for 30 years before retiring in the 1990's. He served on the Rockridge School board for 13 years, 9 of those years he was president. Orin and his wife Irene, a retired Rockridge Elementary school teacher, reside in Milan, IL He is active in the Rock Island County Historical Society, where he

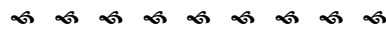
currently volunteers, and he is no stranger to the Essley-Noble museum in Aledo.

This program is open to the public and there is no charge. Afterwards refreshments will be served and you will have an opportunity to explore the exhibits in the museum main building. We hope to see you there!



Thank You for Your Donations

Thank you to the family of Mabel Mayhew for designating memorials to the Mercer County Historical Society. The Board of Directors voted to open our special building and maintenance fund with those moneys. As the Essley-Noble Museum's display areas are "bursting at the seams" and since operating expenses exceed annual dues and interest on savings, we have set up the special fund to provide for future expansion. Additional thank you's to others who have contributed to the building fund with money as well as donated grain.



See You at the Rhubarb Fest

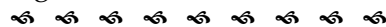
We will have rhubarb desserts, root beer floats, ice cream & coffee in conjunction with the fish fry at our booth for the **Rhubarb Fest** again this year on Saturday June 8 in the northwest corner of the shelter on Rt. #17 & Main St. in Aledo.



We need **donations of rhubarb pies, cobblers, crisps,** and any other rhubarb desserts that you can make. We cannot sell rhubarb custard pies, because of the eggs in the ingredients. If you could donate some **fresh rhubarb,** we would love to have it! Let us know a couple of weeks ahead, and we will even come and get it. If you do not bake and still want to donate pies, we have a source for homemade fresh rhubarb pies.

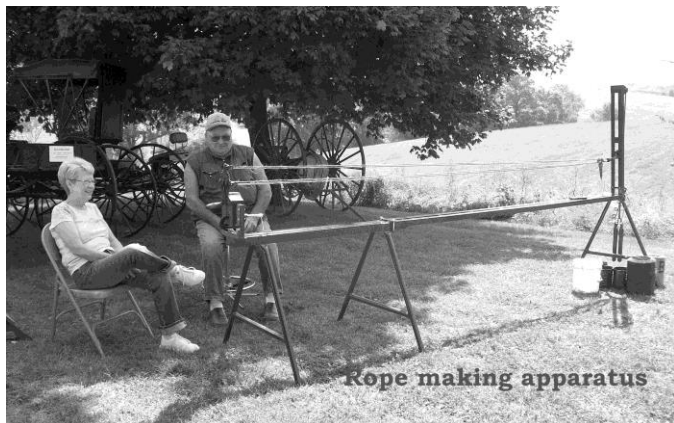
If you can donate any of these things, or have questions, please contact **Bev Gray @ 309-372-4407.** She will be glad to hear from you! This is our main fundraiser of the year and we can sell all of the pies and desserts that we get! We always sell out before everyone leaves.

Also, the Essley-Noble Museum will have extended hours from 10:00-5:00 on Friday and Saturday June 7 & 8. Come and visit and bring any out-of-town guests.



5th Grade Tours

The museum is looking forward to again hosting Mercer County and Sherrard 5th graders May 14-16. They will explore the exhibits and get to try hands-on activities. Below shows Veda Meriwether and Dave Frieden ready with the rope-making apparatus.



Rope making apparatus



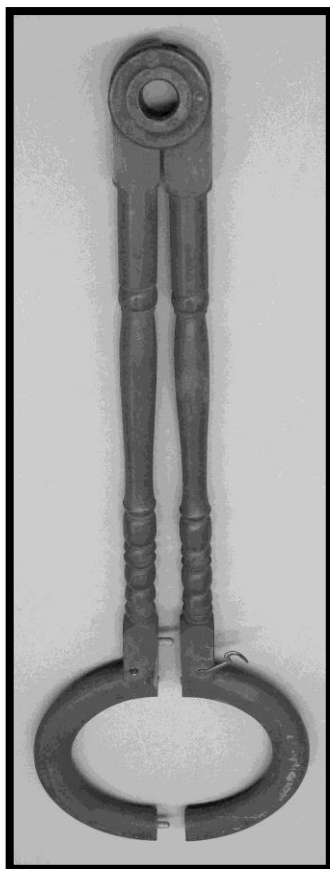
What is It?

The previous "What is It?" was a corn picker, used to pick ears of corn up off the ground, patented in 1922.

This item truly is a "What is it?" since we don't even know.

It is made of wood, is about 27 inches long, and the hinged circle at the end has a bit over a 6-inch inside diameter and locks closed with a light-weight latch.

It seems to be for gentle use, but we do not know. Please submit your ideas to us at the museum and we will share your thoughts in our next newsletter.



ITEMS FOR SALE AT THE MUSEUM

If not picked up at the museum, postage (book rate) is extra. Inquire for insurance or special shipping



For plates, inquire about shipping.

Mercer Remembers.....\$25.00
Soft cover, 11X16", 119 pages
Add \$8 for postage

1864 Mercer Co. Atlas.....\$35 members
Color, soft cover, 37 pages.....**\$40 nonmembers**
Add \$8 for postage

1882 History of Mercer County.....\$25.00
Hardback reprint, 1005 pages, add \$4 postage

1900 Mercer Co. Census & index.....\$20.00
Approx. 3" thick, add \$4 postage

Mercer County Cemeteries.....\$25.00
Locations/color photos, 87 pages, add \$3 postage

Abe Lincoln in Mercer County.....\$5.00
Soft cover, 51 pages, add \$3 postage

Celebrating Yesterday-Viola 125 years.....\$10.00
Soft cover, 110 pages, add \$3 postage

Betty L. Beer note cards, pkg. of 6.....\$3.00
Indicate "False Spring" or "Nathan Listening"
\$1 postage for one or both

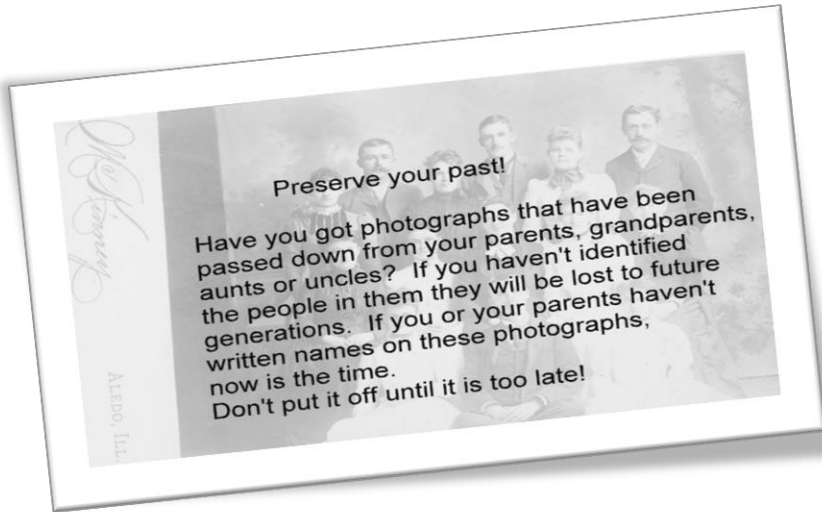
RI Southern R.R. routes of Mercer Co......\$5.00
Circa 1914, 18.5"X18.5" map copy
Add \$4.75 for postage and shipping tube

Bicentennial plate.....\$5.00
Designed by Suzy Bogguss..

Sesquicentennial plate.....\$5.00
For plates, inquire about shipping.



PRESERVE YOUR PAST!



Calendar of Events for 2013:

- | | |
|------------------|---|
| April 3 | Start of regular hours Wed. Sat. Sun 1-5:00 |
| April 15 | Spring Open Meeting 7:00 at the museum.
"Cemeteries in Ruin" Orin Rockhold |
| May 14-16 | 5 th grade tours |
| June 8 | Dessert at the Rhubarb Fest
NW corner of pavilion
Museum open 10:00-5:00 |
| July 9-13 | Mercer Co. Fair booth in the Merchants
Building. Exhibits & Name the Tools
Contest. |
| Aug. 24 | Antique Days special exhibits and
extended hours at the museum 10:00-5:00. |
| Oct. 21 | Fall open meeting. 7:00. Program TBA |

This newsletter sponsored by:



2502 SE 3rd Street Aledo, IL 61231 * 309-582-5145